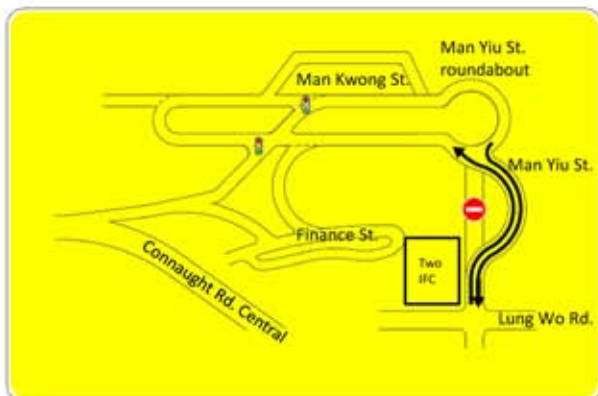




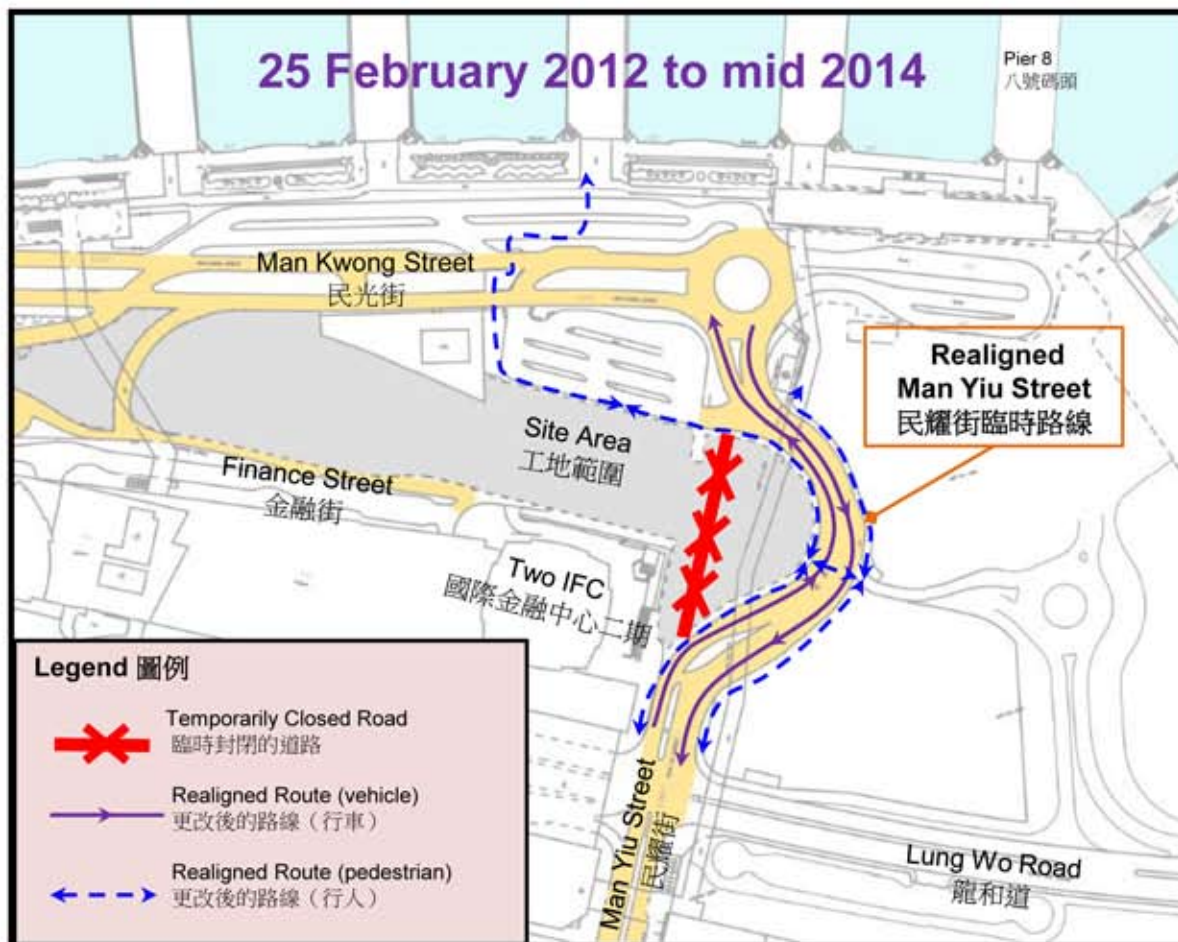
February 2012

Starting from 25 February 2012

Temporary Realignment of Man Yiu Street



To facilitate the construction of Central - Wan Chai Bypass, a section of Man Yiu Street will be shifted eastward from 25 February 2012 to mid 2014. During this period, motorists and pedestrians can use the realigned Man Yiu Street. Details are shown in the diagram below --



For enquiries, please contact us on 24-hour Hotline: 6461 4654 or Email: enquiry@cw-b-hyd.hk